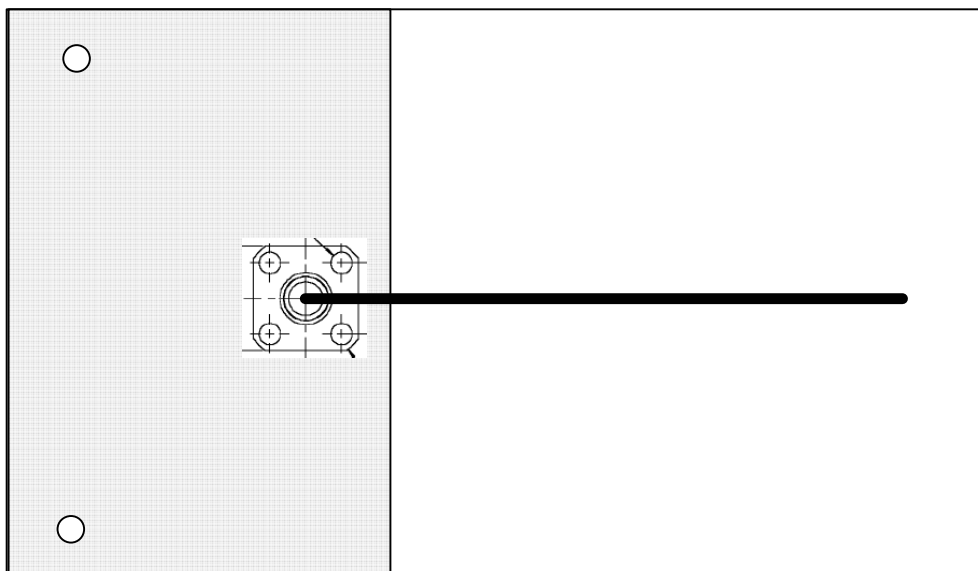


**Assume 1.6mm FR-4**

**trace width = 3mm approx, quarter wavelength = 17mm (compare free space with wire = 31mm)**

**Make quarter wave section about 5mm longer to allow for tuning, 22mm (measured from edge of ground plane shown in grey on bottom layer  
Centre feed one side to SMA conductor, other to one of the SMA mounting**



#### STRAIGHT FEMALE SQUARE FLANGE RECEPTACLES - FLAT TAB

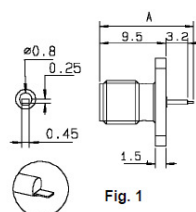


Fig. 1

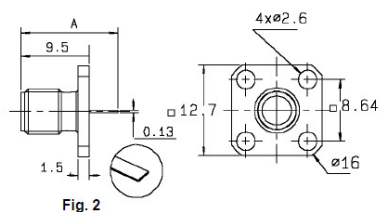


Fig. 2

Part number (gold)	Part number (passivated)	Fig.	Dimensions A (mm)	Captive center contact	Panel drilling
R125 501 000	R125 501 001	1	13.5	yes	P04
R125 510 000	R125 510 001	2	12	yes	P04
R125 620 000	R125 620 001	2	10.38	yes	P04