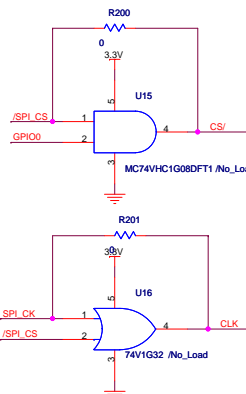
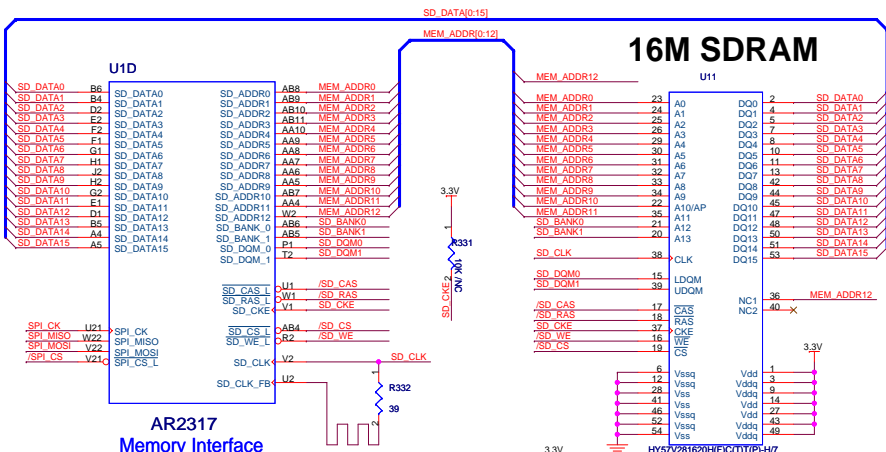
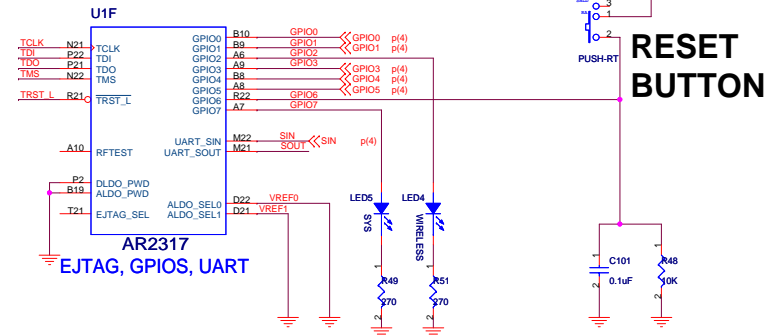


## EJTAG HEADER

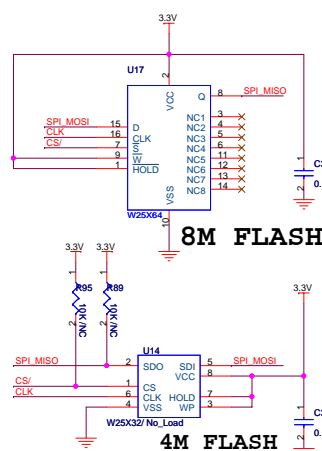
EJTAG SEL HAS INTERNAL PU



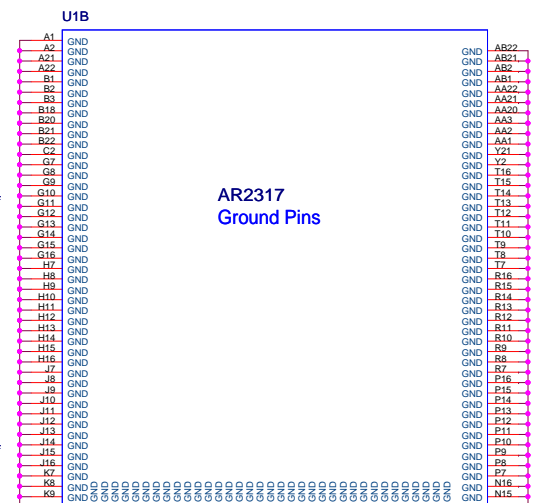
U15 U16 None assigned (No Atheros Key is assigned) in MP



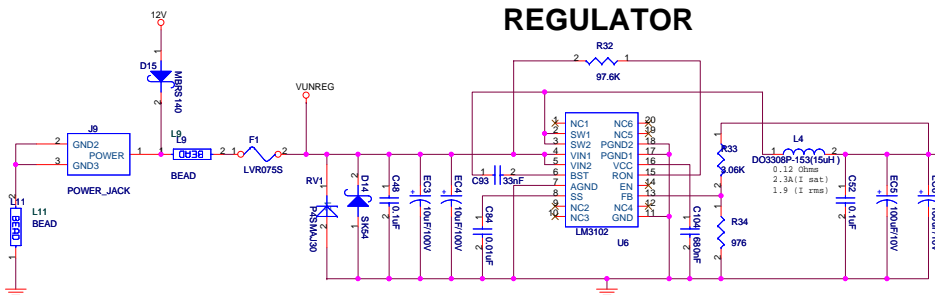
CONNECT SD\_CLK\_FB AT HALF WAY POINT OF SD\_CLK



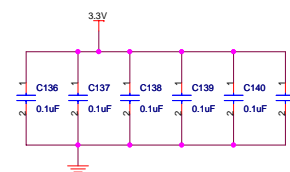
SPI FLASH (Use the 8M Flash in MP)



## 3.3V REGULATOR



Vin = 4.5V to 42V

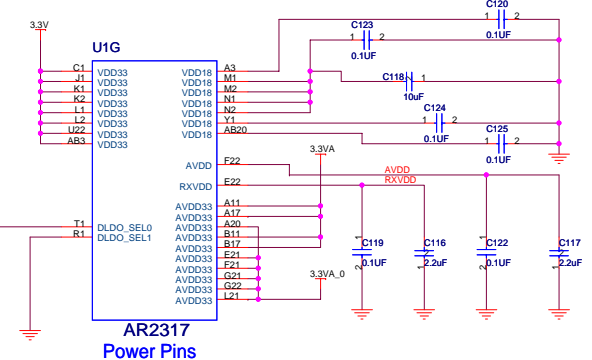


MT HOLES

FIDUCIAL

LOGO

## GROUND PINS



ATCOM Technology Inc.

MP01 - Reset, UART, EJTAG, Config, Power

Document Number: MP01 V1.1

Date: Friday, July 10, 2009

Sheet 1 of 3

